



YUTECH

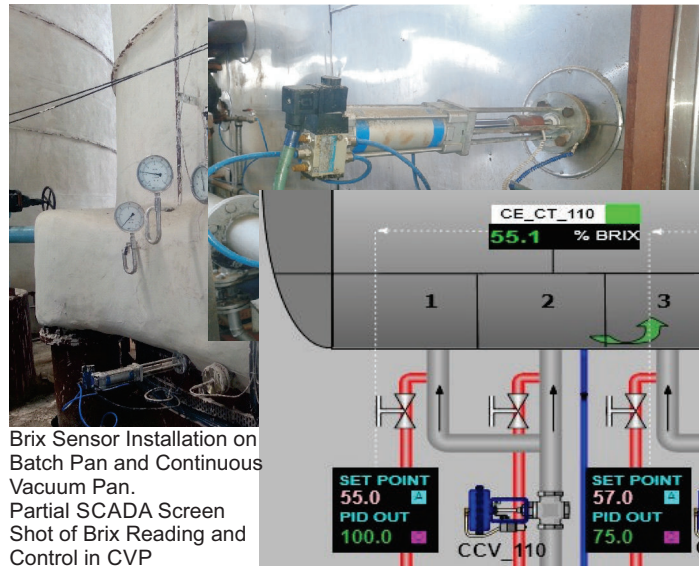
Brix Analyzer

DOC NO: YU-BA-1005-1

Brix Analyzer

YU-ASD-BA-1005-CO-V02 (Continuous Operation)

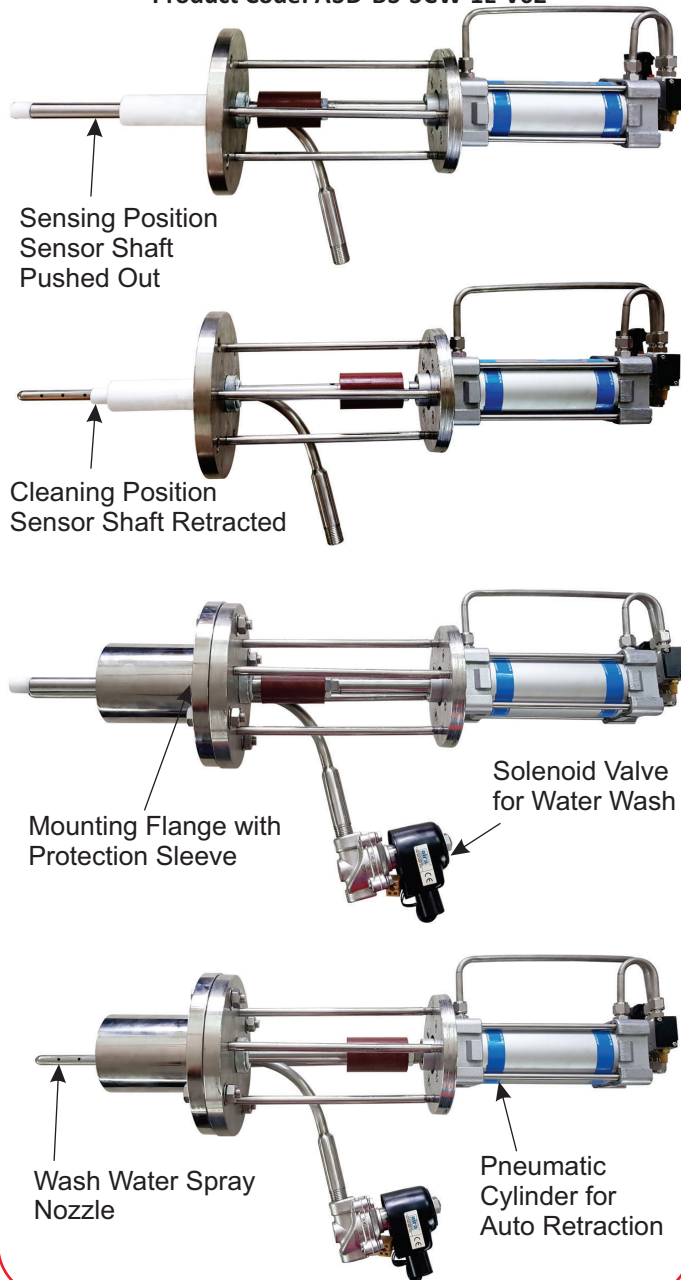
YU-ASD-BA-1005-BO-V02 (Batch Operation)



Brix Sensor Installation on Batch Pan and Continuous Vacuum Pan.
Partial SCADA Screen Shot of Brix Reading and Control in CVP

Brix Sensor Pictures with and without Mounting Flanges and in Sensing and Cleaning Positions

Product Code: ASD-BS-SCW-1E-V02



Brix Analyzer Features:

- Brix Equation with Built-in Auto Purity Compensation Algorithm Accurately derives Brix of Solutions of varying Purity
- Automatic Temperature Compensation
- Easy Calibration and Re-calibration while working
- Built-in Self Cleaning and Washing Routine with adjustable Cleaning Interval
- On-Line Calibration Software YUTECH-AccessApp-BA provides remote access to Brix Analyzer for Calibration, Compensation and Online Remote Trouble shooting



YUTECH

Brix Analyzer

DOC NO: YU-BA-1005-1

Auto Retractable Self Cleaning Brix Sensor Product Code: ASD-BS-SCW-1E-V02

- Brix Sensor Electrode of Stainless Steel Construction
- Wash Water Spray Tube of Stainless Steel Construction with Solenoid Valve and Hand Valve
- Sensor Sheathed in Solid Teflon Bar with Leak Proof Cleaning Arrangement
- RTD PT 100 Temperature Sensor having SS wetted parts with Thermowell Constructed out Solid SS Bar

Brix Analyzer:

Product Code: YU-ASD-BA-1005-CO-V02 for Continuous Operation like in Evaporators, Continuous Pans, Sugar Melters, Molasses Conditioners, Fermentation and Maturation Vessels in Distilleries & Breweries, Dairy, Beverages etc.

Product Code: YU-ASD-BA-1005-BO-V02 for Batch Type Operation like in Batch Type Vacuum Pans.

Brix Analyzer Detects Variation in the Signal which is a Function of the Impedance (Z) of the Slurry whose Brix are to be sensed. Z is the Impedance offered by the Masseccuite (which is sensed as the Resistive and Capacitive Component of the Opposition faced by the Source Current). The Signal is then Processed by a Specially Developed Algorithm called "Brix Equation" which has a Built-in Purity Compensation Sub-Routine.

Brix Analyzer Specifications:

Power Supply: 85 - 265 VAC, 50 – 60Hz

Analyzer Enclosure: Field Mounted Dust and Moisture Proof

Input: Brix Sensor Signal & RTD PT 100 Signal, Calibration: From Keyboard / Remote PC by **YUTECH-AccessApp-BA**

Display: 4 Digit LED Triple Display

Sensor Cleaning and Washing Output: In-Built Potential Free Relay with 24VDC Auxiliary Power Supply

Sensor Cleaning Timing Cycle: Adjustable from Keyboard, default 15 Minutes

Signal Output: 4 - 20 mA Brix Output

Communication: Brix Direct Value Output on Modbus RTU on RS485, Ethernet on Modbus TCP/IP Protocol

Optional PID Control Output: 4-20mA with Built-in Auto/Manual Station

Calibration Range: Selectable as per Model and Application. To be specified during ordering.

Brix Analyzer Applications:

Sugar Industry for Measurement of:

- Masseccuite Brix during Crystalization in **Batch & Continuous Vacuum Pans**
- Masseccuite Brix in **Evaporators, Sugar Melters and Molasses Conditioners**
- Masseccuite Brix in **Open Pans and Boiling Vessels for Jaggery or Muscovado Production and in Khandsaris**
- Sugar Cane Juice or Syrup Brix in **Clarifiers and Evaporators**

Distilleries and Breweries for Measurement of:

- Brix of Liquor / Molasses / Juice / Solutions in **Evaporators, Fermentation and Maturation Vessels**

Other YUTECH Products:

pH Analyzer

Conductivity Analyzer

Draft Pressure & Vacuum Transmitter

Isolation Barriers and Converters

RPM Sensors & Transmitters

YUTECH Sugar Industry Specific Instruments:

IR Type Donnelly Chute Level Sensing and Transmission System

Hall's Effect Type Cane Blanket Level and Top Roller Lift Indicator & Transmitter

Continuous Centrifugal Machine Automation using CSD or Iris Valve

Precision HT and LT Current Transmitter

RTD and TC Type Temperature Transmitter



YUTECH

YU TECHNOLOGIES PVT. LTD.

Head Office & Works: B 8/5, Opposite Power Substation, MIDC, Miraj 416410, Dt. Sangli, Maharashtra, India.

T: +91 233 645 1802 - 3, 264 4042 | E: info@yutech.in,

Sales: sale@yutech.in, Technical: instruments@yutechglobal.com

W: www.yutech.in